

PROCES VERBAL DE RECEPȚIE 593 / 2022

Întocmit astăzi, **08/04/2022**, privind cererea **10905** din **08/04/2022**
având aviz de începere a lucrărilor cu nr din

- 1. Beneficiar:** MUNICIPIUL SFANTU GHEORGHE
- 2. Executant:** Sticea Maria-Nicoleta
- 3. Denumirea lucrărilor recepționate:** PLAN TOPOGRAFIC ÎNTOCMIT ÎN SCOPUL: MODERNIZARE STRADA FLORILOR- faza DALI
- 4. Nominalizarea documentelor și a documentațiilor care se predau Oficiului de Cadastru și Publicitate Imobiliară COVASNA conform avizului de începere a lucrărilor:**

| Număr act | Data act | Tip act | Emitent |
|-------------|------------|-------------------------------|-----------------------|
| 20222746811 | 07.04.2022 | înscris sub semnatura privata | SC YDA PROIECT |
| MASURATORI | 07.04.2022 | înscris sub semnatura privata | SC YDA PROIECT |
| 277 | 25.05.2021 | act administrativ | PRIMARIA MUNICIPIULUI |
| PLAN | 07.04.2022 | înscris sub semnatura privata | SC YDA PROIECT |

Așa cum sunt atașate la cerere.

5. Concluzii:

Pentru procesul verbal 593 au fost recepționate 0 propuneri.

6. Erori topologice față de alte entități spațiale:

| Identificator | Tip eroare | Mesaj suprapunere |
|---------------|------------|---|
| - | Avertizare | Receptia 1633565: Imobilul TR-492-1 se afla într-o zona reglementată prin L17/2014! |

Lucrarea este declarată **Admisă**

Inspector
LAZAR-AUREL POP

Aurel
-Lazar
Pop

Semnat
digital de
Aurel-Lazar
Pop
Data:
2022.04.08
10:33:40
+03'00'

MEMORIU TEHNIC

1. Adresa imobilului:

Imobilul este situat Intravilan municipiul Sfântu Gheorghe, str. Florilor, județul Covasna.

2. Titlul lucrării:

PLAN TOPOGRAFIC INTOCMIT ÎN SCOPUL: MODERNIZARE STRADA FLORILOR- faza DALI

3. Scurtă prezentare a situației din teren:

Imobilul este parțial împrejmuit și este situat în intravilan municipiul Sfântu Gheorghe, str. Florilor, județul Covasna.

Planul topografic s-a realizat pe suprafața de 5547 mp.

4. Operațiuni topo cadastrale efectuate:

1. Faza de teren care cuprinde:

- recunoașterea terenului de măsurat;
- ridicarea în plan a detaliilor: căi de comunicație, limite imobile, identificarea construcțiilor, alte elemente topografice caracteristice ale terenului reprezentate pe plan prin semne convenționale cu determinarea poziției în sistem de coordonate Stereo 70.

2. Faza de birou care cuprinde:

- calcule topografice;
- redactarea planurilor;
- cartografierea planurilor.

Faza de teren:

Recunoașterea obiectivului a fost efectuată împreună cu beneficiarul pentru a identifica terenul și pentru a stabili limitele.

Ridicarea în plan a detaliilor a fost efectuată cu ajutorul receptorului STONEX S8 dublă frecvență GPS+GLONASS-rover RTK.

RTK Fixat Orizontal: 10mm+/-1ppm(RMS)

RTK Fixat Vertical: 20mm+/-1ppm(RMS)

Măsurătorile au fost realizate cu următoarele setări de determinare :

- Tip soluție înregistrare acceptată : FIXA ;
- Toleranța de determinare a punctelor orizontală și verticală +/- 3 cm ;
- RTK Method: RTCM V3.0;
- Device: Internet/Phone ;
- Network: NTRIP TVN_RTCM_30.

Pentru punctele de detaliu s-au realizat **masuratori GNSS cinematice** în modul RTK-RTCM V3.0 prin utilizarea în timp real a corecțiilor diferențiale de la RETEAUA DE STATII PERMANENTE SYSCAD RTK.

USER:MARIA Denumire job. JB,NMAPSFALT SF GHE1103,DT11-03-2022,TM12:39:20

JB,NMASFALT 1103,DT03-11-2022,TM11:50:14

JB,NMASFALT,DT03-03-2022,TM10:35:31

JB,NMASFALT0303,DT03-03-2022,TM14:33:12

JB,NMASFALT0403,DT03-04-2022,TM08:45:46

Transcaltul, de coordonate din sistem geocentric (B,L,h) în sistemul național de referință (X,Y,Z), s-a realizat utilizând softul TransDat v.4.01 pus la dispoziție în mod gratuit de către A.N.C.P.I.(www.ancpi.ro).

Ridicarea s-a executat în **Sisteme de proiecție pe plan secant unic 1970 și sisteme geocentric adoptate ETRS89 Sistem European WGS 84**.

Cotele s-au determinat în sistemul național de referință Marea Neagră 1975.

- Întocmirea planului topografic s-a făcut la scara 1:500, în sistem Stereografic 1970

Digitally signed by
STICEA MARIA-NICOLETA
Reason: SC YDA PROIECT
CONSULTING SRL, SERIA
RO-B-J NR.2300, ING.
STICEA MARIA NICOLETA,
SERIA RO-NT-F, NR. 0099
Date: 2022.04.07 17:16:39
+03'00'

Faza de birou

Calcul topografice

După efectuarea unei prelucrări primare având drept scop verificarea inițială a măsurătorilor din teren s-a trecut la raportarea coordonatelor și întocmirea documentației. Calculul punctelor s-a efectuat cu calculatorul Intel Core I3, utilizându-se programele: TopoLT, CIVIL 3D.

În urma calculelor rezultând următorul inventar de coordonate:

| Nr. pct. | Inventar de coordonate | | |
|-------------|-------------------------------------|------------|---------|
| | Sistem de proiectie 1970 | | |
| | Plan de referinta Marea Neagra 1975 | | |
| | X[m] | Y[m] | Z[m] |
| 1 | 484489.767 | 560202.051 | 542.530 |
| 2 | 484489.072 | 560202.383 | 542.460 |
| 3 | 484489.388 | 560203.512 | 542.450 |
| 4 | 484489.329 | 560203.735 | 542.370 |
| 5 | 484489.178 | 560205.292 | 542.390 |
| 6 | 484489.771 | 560207.637 | 542.480 |
| 7 | 484488.383 | 560208.348 | 542.410 |
| 8 | 484487.034 | 560212.836 | 542.380 |
| 9 | 484486.944 | 560212.919 | 542.460 |
| 10 | 484486.311 | 560214.313 | 542.510 |
| 11 | 484486.235 | 560214.438 | 542.500 |
| 12 | 484486.103 | 560214.644 | 542.690 |
| 13 | 484484.427 | 560214.281 | 542.640 |
| 14 | 484484.379 | 560213.880 | 542.480 |
| 15 | 484484.325 | 560213.859 | 542.410 |
| 16 | 484482.826 | 560212.195 | 542.110 |
| 17 | 484481.635 | 560199.954 | 541.680 |
| 18 | 484483.075 | 560200.570 | 542.030 |
| 19 | 484483.468 | 560200.693 | 542.000 |
| 20 | 484484.257 | 560200.660 | 542.070 |
| 21 | 484483.730 | 560202.044 | 541.980 |
| 22 | 484487.439 | 560203.233 | 542.360 |
| 23 | 484487.540 | 560201.454 | 542.350 |
| 24 | 484478.630 | 560199.215 | 541.370 |
| 25 | 484478.143 | 560200.512 | 541.480 |
| 26 | 484478.058 | 560200.820 | 541.410 |
| 27 | 484476.764 | 560205.140 | 541.420 |
| 28 | 484475.366 | 560209.325 | 541.440 |
| 29 | 484475.310 | 560209.431 | 541.540 |
| 30 | 484474.854 | 560210.989 | 541.610 |
| 31 | 484474.224 | 560199.484 | 541.140 |
| 32 | 484474.453 | 560198.204 | 541.170 |
| 33 | 484469.051 | 560196.711 | 540.690 |
| 34 | 484468.882 | 560197.431 | 540.640 |
| 35 | 484468.633 | 560198.125 | 540.530 |
| 36 | 484467.333 | 560202.420 | 540.610 |

| Nr. pct. | Inventar de coordonate | | |
|-------------|-------------------------------------|------------|---------|
| | Sistem de proiectie 1970 | | |
| | Plan de referinta Marea Neagra 1975 | | |
| | X[m] | Y[m] | Z[m] |
| 37 | 484465.980 | 560206.510 | 540.620 |
| 38 | 484465.905 | 560206.664 | 540.730 |
| 39 | 484465.344 | 560208.251 | 540.810 |
| 40 | 484491.799 | 560209.232 | 542.710 |
| 41 | 484501.854 | 560211.407 | 543.490 |
| 42 | 484504.626 | 560211.737 | 543.690 |
| 43 | 484510.051 | 560205.722 | 543.890 |
| 44 | 484510.282 | 560205.887 | 543.930 |
| 45 | 484509.537 | 560211.963 | 544.130 |
| 46 | 484508.850 | 560216.814 | 544.120 |
| 47 | 484508.865 | 560217.030 | 544.220 |
| 48 | 484508.692 | 560218.626 | 544.250 |
| 49 | 484515.985 | 560217.298 | 544.650 |
| 50 | 484515.972 | 560217.485 | 544.790 |
| 51 | 484520.536 | 560218.933 | 545.270 |
| 52 | 484520.602 | 560217.478 | 545.180 |
| 53 | 484520.614 | 560217.273 | 545.070 |
| 54 | 484520.189 | 560216.670 | 544.980 |
| 55 | 484521.165 | 560212.718 | 545.010 |
| 56 | 484521.533 | 560207.815 | 544.990 |
| 57 | 484521.636 | 560207.210 | 545.060 |
| 58 | 484521.470 | 560205.360 | 544.890 |
| 59 | 484522.999 | 560208.252 | 545.070 |
| 60 | 484531.421 | 560203.702 | 546.160 |
| 61 | 484531.490 | 560205.161 | 546.130 |
| 62 | 484531.640 | 560206.640 | 546.090 |
| 63 | 484531.662 | 560207.531 | 546.070 |
| 64 | 484531.676 | 560208.310 | 545.970 |
| 65 | 484531.169 | 560212.722 | 546.010 |
| 66 | 484530.987 | 560216.873 | 546.000 |
| 67 | 484531.047 | 560217.038 | 546.140 |
| 68 | 484530.966 | 560218.641 | 546.200 |
| 69 | 484530.145 | 560210.844 | 545.850 |
| 70 | 484535.882 | 560203.213 | 546.650 |
| 71 | 484541.664 | 560201.580 | 547.080 |
| 72 | 484544.469 | 560200.925 | 547.210 |

| Nr. pct. | Inventar de coordonate | | |
|-------------|-------------------------------------|------------|---------|
| | Sistem de proiectie 1970 | | |
| | Plan de referinta Marea Neagra 1975 | | |
| | X[m] | Y[m] | Z[m] |
| 73 | 484549.411 | 560198.801 | 547.140 |
| 74 | 484552.749 | 560197.754 | 547.280 |
| 75 | 484517.941 | 560209.559 | 544.710 |
| 76 | 484510.159 | 560205.561 | 543.910 |
| 77 | 484510.175 | 560205.290 | 543.920 |
| 78 | 484510.312 | 560204.948 | 543.840 |
| 79 | 484510.760 | 560204.624 | 543.810 |
| 80 | 484500.363 | 560206.117 | 543.290 |
| 81 | 484497.338 | 560210.164 | 543.130 |
| 82 | 484494.544 | 560202.701 | 542.850 |
| 83 | 484494.081 | 560201.123 | 542.750 |
| 84 | 484495.339 | 560200.831 | 542.890 |
| 85 | 484495.465 | 560201.011 | 542.870 |
| 86 | 484493.307 | 560203.033 | 542.720 |
| 87 | 484498.675 | 560204.459 | 543.100 |
| 88 | 484499.649 | 560199.465 | 543.070 |
| 89 | 484499.900 | 560200.711 | 543.070 |
| 90 | 484505.520 | 560197.545 | 543.240 |
| 91 | 484505.862 | 560198.714 | 543.310 |
| 92 | 484505.927 | 560198.923 | 543.280 |
| 93 | 484506.858 | 560201.820 | 543.380 |
| 94 | 484507.045 | 560198.641 | 543.350 |
| 95 | 484506.912 | 560197.437 | 543.380 |
| 96 | 484507.166 | 560196.984 | 543.390 |
| 97 | 484510.699 | 560195.857 | 543.380 |
| 98 | 484510.861 | 560196.018 | 543.370 |
| 99 | 484511.181 | 560196.253 | 543.560 |
| 100 | 484511.016 | 560197.054 | 543.430 |
| 101 | 484511.436 | 560197.851 | 543.420 |
| 102 | 484512.562 | 560200.870 | 543.540 |
| 103 | 484513.610 | 560203.354 | 543.650 |
| 104 | 484507.425 | 560199.067 | 543.270 |
| 105 | 484511.811 | 560204.690 | 543.930 |
| 106 | 484513.153 | 560204.781 | 544.080 |
| 107 | 484514.794 | 560204.935 | 544.260 |
| 108 | 484515.262 | 560205.087 | 544.270 |

| Nr. pct. | Inventar de coordonate | | |
|-------------|-------------------------------------|------------|---------|
| | Sistem de proiectie 1970 | | |
| | Plan de referinta Marea Neagra 1975 | | |
| | X[m] | Y[m] | Z[m] |
| 109 | 484518.085 | 560204.481 | 544.430 |
| 110 | 484518.386 | 560205.790 | 544.480 |
| 111 | 484515.363 | 560204.334 | 544.270 |
| 112 | 484515.139 | 560203.766 | 543.930 |
| 113 | 484513.405 | 560196.914 | 543.290 |
| 114 | 484513.501 | 560195.516 | 543.020 |
| 115 | 484517.741 | 560193.925 | 543.060 |
| 116 | 484518.190 | 560195.126 | 543.220 |
| 117 | 484518.684 | 560196.149 | 543.460 |
| 118 | 484519.326 | 560197.626 | 543.500 |
| 119 | 484519.909 | 560199.048 | 543.570 |
| 120 | 484520.491 | 560201.801 | 543.740 |
| 121 | 484520.607 | 560202.073 | 543.980 |
| 122 | 484520.630 | 560203.284 | 544.450 |
| 123 | 484523.848 | 560191.921 | 543.150 |
| 124 | 484524.276 | 560191.530 | 542.970 |
| 125 | 484527.383 | 560190.289 | 543.040 |
| 126 | 484528.392 | 560189.945 | 543.050 |
| 127 | 484528.907 | 560191.140 | 543.210 |
| 128 | 484528.167 | 560191.410 | 543.230 |
| 129 | 484528.483 | 560189.727 | 543.400 |
| 130 | 484529.417 | 560191.101 | 543.440 |
| 131 | 484529.873 | 560192.895 | 543.560 |
| 132 | 484530.255 | 560193.948 | 543.560 |
| 133 | 484530.867 | 560195.275 | 543.590 |
| 134 | 484530.986 | 560195.908 | 543.710 |
| 135 | 484531.377 | 560197.470 | 543.890 |
| 136 | 484531.880 | 560199.402 | 544.030 |
| 137 | 484532.120 | 560200.220 | 544.510 |
| 138 | 484529.532 | 560195.794 | 543.600 |
| 139 | 484535.560 | 560187.225 | 543.650 |
| 140 | 484538.811 | 560185.365 | 543.260 |
| 141 | 484541.885 | 560183.944 | 543.340 |
| 142 | 484541.841 | 560184.133 | 543.360 |
| 143 | 484542.206 | 560183.825 | 543.070 |
| 144 | 484545.407 | 560182.578 | 542.980 |
| 145 | 484545.946 | 560182.353 | 543.120 |
| 146 | 484546.620 | 560182.265 | 543.190 |
| 147 | 484546.293 | 560183.540 | 543.310 |
| 148 | 484546.786 | 560184.747 | 543.460 |
| 149 | 484547.236 | 560185.732 | 543.610 |
| 150 | 484548.001 | 560187.270 | 543.630 |
| 151 | 484548.708 | 560188.817 | 543.620 |
| 152 | 484549.002 | 560189.646 | 543.800 |

| Nr. pct. | Inventar de coordonate | | |
|-------------|-------------------------------------|------------|---------|
| | Sistem de proiectie 1970 | | |
| | Plan de referinta Marea Neagra 1975 | | |
| | X[m] | Y[m] | Z[m] |
| 153 | 484558.857 | 560184.851 | 543.930 |
| 154 | 484558.615 | 560184.370 | 543.690 |
| 155 | 484557.841 | 560182.993 | 543.650 |
| 156 | 484557.096 | 560181.301 | 543.580 |
| 157 | 484556.592 | 560180.236 | 543.570 |
| 158 | 484556.199 | 560179.878 | 543.710 |
| 159 | 484555.207 | 560178.283 | 543.340 |
| 160 | 484556.930 | 560178.818 | 543.490 |
| 161 | 484561.192 | 560184.148 | 544.250 |
| 162 | 484560.508 | 560176.883 | 543.500 |
| 163 | 484564.144 | 560175.124 | 543.590 |
| 164 | 484564.336 | 560175.666 | 543.620 |
| 165 | 484564.698 | 560176.005 | 543.640 |
| 166 | 484565.728 | 560177.652 | 543.630 |
| 167 | 484566.787 | 560179.145 | 543.640 |
| 168 | 484567.014 | 560179.792 | 543.820 |
| 169 | 484566.907 | 560180.466 | 544.310 |
| 170 | 484567.606 | 560173.001 | 543.530 |
| 171 | 484572.924 | 560177.331 | 544.430 |
| 172 | 484570.006 | 560171.249 | 543.530 |
| 173 | 484570.166 | 560171.401 | 543.560 |
| 174 | 484570.460 | 560171.727 | 543.630 |
| 175 | 484571.815 | 560173.385 | 543.680 |
| 176 | 484573.024 | 560174.682 | 543.740 |
| 177 | 484573.578 | 560175.270 | 544.060 |
| 178 | 484574.000 | 560175.646 | 544.280 |
| 179 | 484572.858 | 560168.939 | 543.550 |
| 180 | 484573.880 | 560168.215 | 543.560 |
| 181 | 484577.917 | 560165.986 | 543.650 |
| 182 | 484578.594 | 560164.598 | 543.620 |
| 183 | 484579.095 | 560164.895 | 543.630 |
| 184 | 484579.390 | 560165.287 | 543.620 |
| 185 | 484580.444 | 560166.878 | 543.690 |
| 186 | 484581.464 | 560168.087 | 543.670 |
| 187 | 484581.831 | 560168.613 | 544.210 |
| 188 | 484583.138 | 560160.936 | 543.490 |
| 189 | 484587.355 | 560157.651 | 543.320 |
| 190 | 484587.603 | 560158.116 | 543.420 |
| 191 | 484588.023 | 560158.700 | 543.600 |
| 192 | 484589.071 | 560159.968 | 543.650 |
| 193 | 484589.963 | 560161.119 | 543.670 |
| 194 | 484589.508 | 560162.593 | 544.170 |
| 195 | 484591.317 | 560154.607 | 543.340 |
| 196 | 484597.301 | 560150.303 | 543.810 |

| Nr. pct. | Inventar de coordonate | | |
|-------------|-------------------------------------|------------|---------|
| | Sistem de proiectie 1970 | | |
| | Plan de referinta Marea Neagra 1975 | | |
| | X[m] | Y[m] | Z[m] |
| 197 | 484597.441 | 560150.554 | 543.820 |
| 198 | 484597.850 | 560151.145 | 543.910 |
| 199 | 484599.033 | 560152.642 | 543.930 |
| 200 | 484600.015 | 560153.969 | 544.000 |
| 201 | 484600.177 | 560154.569 | 544.550 |
| 202 | 484601.950 | 560147.446 | 543.910 |
| 203 | 484606.896 | 560142.781 | 543.900 |
| 204 | 484607.130 | 560142.918 | 543.900 |
| 205 | 484607.479 | 560143.445 | 543.960 |
| 206 | 484608.060 | 560144.044 | 544.020 |
| 207 | 484608.803 | 560144.861 | 544.040 |
| 208 | 484609.743 | 560145.900 | 544.090 |
| 209 | 484610.301 | 560146.612 | 544.670 |
| 210 | 484611.508 | 560139.080 | 543.620 |
| 211 | 484614.157 | 560136.756 | 543.700 |
| 212 | 484614.541 | 560137.371 | 543.850 |
| 213 | 484614.964 | 560137.838 | 543.960 |
| 214 | 484615.953 | 560138.745 | 543.970 |
| 215 | 484617.225 | 560139.917 | 543.990 |
| 216 | 484618.142 | 560140.936 | 544.620 |
| 217 | 484616.707 | 560134.888 | 543.840 |
| 218 | 484617.014 | 560134.458 | 543.850 |
| 219 | 484616.790 | 560134.341 | 543.860 |
| 220 | 484617.197 | 560134.804 | 543.870 |
| 221 | 484617.710 | 560135.371 | 543.960 |
| 222 | 484618.555 | 560136.587 | 543.970 |
| 223 | 484619.376 | 560137.811 | 543.990 |
| 224 | 484620.101 | 560138.780 | 544.220 |
| 225 | 484622.370 | 560130.791 | 544.100 |
| 226 | 484622.624 | 560131.120 | 544.140 |
| 227 | 484622.905 | 560131.372 | 544.110 |
| 228 | 484623.749 | 560132.168 | 544.090 |
| 229 | 484624.709 | 560133.159 | 544.110 |
| 230 | 484625.154 | 560133.591 | 544.080 |
| 231 | 484625.285 | 560133.806 | 543.800 |
| 232 | 484625.601 | 560133.985 | 544.120 |
| 233 | 484625.797 | 560134.375 | 544.390 |
| 234 | 484626.763 | 560126.656 | 544.530 |
| 235 | 484626.908 | 560126.279 | 544.460 |
| 236 | 484627.353 | 560126.641 | 544.480 |
| 237 | 484627.623 | 560126.937 | 544.430 |
| 238 | 484628.557 | 560127.896 | 544.440 |
| 239 | 484629.562 | 560128.894 | 544.450 |
| 240 | 484630.007 | 560129.182 | 544.620 |

| Nr. pct. | Inventar de coordonate | | |
|-------------|-------------------------------------|------------|---------|
| | Sistem de proiectie 1970 | | |
| | Plan de referinta Marea Neagra 1975 | | |
| | X[m] | Y[m] | Z[m] |
| 241 | 484630.406 | 560129.466 | 544.490 |
| 242 | 484630.720 | 560129.866 | 544.700 |
| 243 | 484631.460 | 560130.360 | 545.070 |
| 244 | 484631.758 | 560130.824 | 545.270 |
| 245 | 484629.289 | 560124.210 | 544.440 |
| 246 | 484631.249 | 560121.285 | 544.690 |
| 247 | 484631.638 | 560121.549 | 544.740 |
| 248 | 484632.147 | 560121.862 | 544.680 |
| 249 | 484633.371 | 560122.891 | 544.630 |
| 250 | 484634.633 | 560124.044 | 544.670 |
| 251 | 484635.274 | 560124.762 | 544.960 |
| 252 | 484635.606 | 560125.023 | 544.780 |
| 253 | 484635.947 | 560125.326 | 544.850 |
| 254 | 484636.253 | 560125.907 | 545.040 |
| 255 | 484632.817 | 560119.197 | 544.700 |
| 256 | 484635.071 | 560115.730 | 544.810 |
| 257 | 484635.488 | 560116.021 | 544.860 |
| 258 | 484635.692 | 560116.380 | 544.810 |
| 259 | 484638.023 | 560117.988 | 544.850 |
| 260 | 484639.986 | 560119.813 | 545.050 |
| 261 | 484640.718 | 560120.569 | 545.270 |
| 262 | 484641.012 | 560120.931 | 545.160 |
| 263 | 484641.569 | 560121.487 | 545.420 |
| 264 | 484642.080 | 560121.936 | 545.760 |
| 265 | 484637.512 | 560111.872 | 545.030 |
| 266 | 484637.704 | 560111.298 | 545.060 |
| 267 | 484638.035 | 560110.903 | 545.070 |
| 268 | 484638.840 | 560109.147 | 545.040 |
| 269 | 484639.269 | 560109.409 | 545.040 |
| 270 | 484639.675 | 560109.505 | 545.040 |
| 271 | 484642.877 | 560111.200 | 545.070 |
| 272 | 484646.676 | 560112.377 | 545.330 |
| 273 | 484647.664 | 560112.821 | 545.810 |
| 274 | 484648.339 | 560113.198 | 546.080 |
| 275 | 484648.893 | 560113.444 | 545.940 |
| 276 | 484649.412 | 560113.875 | 546.170 |
| 277 | 484649.787 | 560114.212 | 546.510 |
| 278 | 484648.948 | 560114.136 | 546.100 |
| 279 | 484641.715 | 560104.531 | 545.030 |
| 280 | 484643.049 | 560102.207 | 544.960 |
| 281 | 484643.485 | 560102.593 | 544.930 |
| 282 | 484645.666 | 560104.366 | 545.090 |
| 283 | 484647.086 | 560104.468 | 545.020 |
| 284 | 484651.720 | 560110.105 | 546.600 |

| Nr. pct. | Inventar de coordonate | | |
|-------------|-------------------------------------|------------|---------|
| | Sistem de proiectie 1970 | | |
| | Plan de referinta Marea Neagra 1975 | | |
| | X[m] | Y[m] | Z[m] |
| 285 | 484652.011 | 560110.913 | 546.240 |
| 286 | 484652.594 | 560111.499 | 546.740 |
| 287 | 484649.239 | 560107.655 | 545.580 |
| 288 | 484620.686 | 560135.268 | 544.000 |
| 289 | 484618.465 | 560135.003 | 543.960 |
| 290 | 484621.134 | 560132.822 | 544.030 |
| 291 | 484536.991 | 560195.293 | 544.210 |
| 292 | 484537.381 | 560196.832 | 544.320 |
| 293 | 484537.816 | 560198.165 | 544.430 |
| 294 | 484537.868 | 560198.701 | 544.750 |
| 295 | 484537.567 | 560194.943 | 544.240 |
| 296 | 484544.434 | 560193.473 | 544.860 |
| 297 | 484544.552 | 560193.836 | 544.840 |
| 298 | 484544.979 | 560194.971 | 544.920 |
| 299 | 484545.545 | 560196.296 | 545.010 |
| 300 | 484545.564 | 560197.017 | 545.400 |
| 301 | 484545.750 | 560192.636 | 544.590 |
| 302 | 484553.578 | 560193.902 | 545.430 |
| 303 | 484554.429 | 560193.124 | 545.360 |
| 304 | 484554.276 | 560192.810 | 545.350 |
| 305 | 484553.931 | 560191.980 | 545.320 |
| 306 | 484553.304 | 560190.545 | 545.150 |
| 307 | 484553.208 | 560190.227 | 545.180 |
| 308 | 484556.745 | 560188.453 | 545.180 |
| 309 | 484561.240 | 560189.943 | 545.700 |
| 310 | 484561.277 | 560189.992 | 545.540 |
| 311 | 484560.813 | 560188.916 | 545.580 |
| 312 | 484560.382 | 560187.602 | 545.400 |
| 313 | 484560.105 | 560186.966 | 545.330 |
| 314 | 484565.268 | 560188.517 | 545.640 |
| 315 | 484568.442 | 560187.177 | 545.720 |
| 316 | 484568.331 | 560187.003 | 545.700 |
| 317 | 484568.250 | 560186.720 | 545.700 |
| 318 | 484567.711 | 560185.606 | 545.600 |
| 319 | 484567.114 | 560184.295 | 545.640 |
| 320 | 484566.683 | 560183.691 | 545.440 |
| 321 | 484570.715 | 560186.143 | 545.950 |
| 322 | 484574.946 | 560184.374 | 546.360 |
| 323 | 484575.950 | 560184.103 | 546.350 |
| 324 | 484576.100 | 560183.960 | 546.360 |
| 325 | 484575.539 | 560183.405 | 546.190 |
| 326 | 484575.343 | 560182.985 | 546.080 |
| 327 | 484574.792 | 560181.583 | 545.940 |
| 328 | 484574.048 | 560180.249 | 545.840 |

| Nr. pct. | Inventar de coordonate | | |
|-------------|-------------------------------------|------------|---------|
| | Sistem de proiectie 1970 | | |
| | Plan de referinta Marea Neagra 1975 | | |
| | X[m] | Y[m] | Z[m] |
| 329 | 484573.527 | 560179.893 | 545.710 |
| 330 | 484579.051 | 560180.796 | 546.290 |
| 331 | 484578.933 | 560180.539 | 546.220 |
| 332 | 484578.087 | 560179.260 | 546.050 |
| 333 | 484577.444 | 560178.289 | 545.990 |
| 334 | 484576.675 | 560177.384 | 545.840 |
| 335 | 484584.798 | 560178.246 | 546.470 |
| 336 | 484584.134 | 560177.573 | 546.400 |
| 337 | 484583.674 | 560176.945 | 546.350 |
| 338 | 484582.857 | 560175.757 | 546.230 |
| 339 | 484581.848 | 560174.402 | 546.110 |
| 340 | 484581.010 | 560173.299 | 545.800 |
| 341 | 484592.754 | 560172.439 | 546.540 |
| 342 | 484592.362 | 560171.959 | 546.430 |
| 343 | 484591.792 | 560172.989 | 546.560 |
| 344 | 484592.028 | 560171.518 | 546.410 |
| 345 | 484591.835 | 560170.813 | 546.350 |
| 346 | 484591.067 | 560169.531 | 546.320 |
| 347 | 484590.281 | 560168.165 | 546.250 |
| 348 | 484589.687 | 560167.421 | 546.010 |
| 349 | 484594.302 | 560171.365 | 546.330 |
| 350 | 484596.763 | 560169.536 | 546.330 |
| 351 | 484597.906 | 560168.695 | 546.360 |
| 352 | 484598.707 | 560168.065 | 546.390 |
| 353 | 484598.212 | 560167.561 | 546.360 |
| 354 | 484597.755 | 560166.750 | 546.460 |
| 355 | 484596.961 | 560165.336 | 546.420 |
| 356 | 484596.129 | 560163.978 | 546.350 |
| 357 | 484595.633 | 560163.205 | 546.150 |
| 358 | 484598.465 | 560167.141 | 546.410 |
| 359 | 484598.674 | 560167.509 | 546.360 |
| 360 | 484603.097 | 560164.742 | 546.570 |
| 361 | 484609.606 | 560126.340 | 542.230 |
| 362 | 484609.857 | 560126.266 | 542.210 |
| 363 | 484610.218 | 560125.765 | 542.190 |
| 364 | 484610.983 | 560125.173 | 542.190 |
| 365 | 484611.720 | 560124.355 | 542.140 |
| 366 | 484612.353 | 560123.513 | 542.080 |
| 367 | 484599.598 | 560117.397 | 540.020 |
| 368 | 484599.826 | 560117.265 | 540.080 |
| 369 | 484600.287 | 560116.872 | 540.250 |
| 370 | 484600.722 | 560116.247 | 540.220 |
| 371 | 484601.420 | 560115.510 | 540.180 |
| 372 | 484602.391 | 560114.843 | 540.180 |

| Nr. pct. | Inventar de coordonate | | |
|-------------|-------------------------------------|------------|---------|
| | Sistem de proiectie 1970 | | |
| | Plan de referinta Marea Neagra 1975 | | |
| | X[m] | Y[m] | Z[m] |
| 373 | 484602.745 | 560114.228 | 540.130 |
| 374 | 484603.303 | 560113.603 | 540.240 |
| 375 | 484595.168 | 560104.034 | 539.000 |
| 376 | 484595.158 | 560104.372 | 539.030 |
| 377 | 484594.706 | 560104.713 | 539.070 |
| 378 | 484593.870 | 560105.332 | 539.040 |
| 379 | 484592.852 | 560105.717 | 539.010 |
| 380 | 484592.433 | 560105.298 | 538.980 |
| 381 | 484591.844 | 560105.887 | 538.930 |
| 382 | 484590.471 | 560106.739 | 538.820 |
| 383 | 484817.852 | 559932.929 | 557.940 |
| 384 | 484817.927 | 559931.098 | 557.790 |
| 385 | 484812.960 | 559931.532 | 557.940 |
| 386 | 484812.781 | 559932.383 | 558.010 |
| 387 | 484811.399 | 559930.915 | 557.830 |
| 388 | 484809.531 | 559930.881 | 557.810 |
| 389 | 484807.479 | 559931.745 | 557.880 |
| 390 | 484805.827 | 559930.565 | 557.860 |
| 391 | 484803.427 | 559931.294 | 557.750 |
| 392 | 484805.186 | 559926.758 | 557.550 |
| 393 | 484806.383 | 559921.477 | 556.930 |
| 394 | 484807.912 | 559921.524 | 556.980 |
| 395 | 484810.631 | 559921.729 | 557.020 |
| 396 | 484812.483 | 559921.858 | 557.150 |
| 397 | 484813.962 | 559921.932 | 557.270 |
| 398 | 484816.731 | 559921.817 | 557.350 |
| 399 | 484819.543 | 559921.732 | 557.370 |
| 400 | 484818.984 | 559912.948 | 557.220 |
| 401 | 484816.960 | 559912.923 | 556.630 |
| 402 | 484815.389 | 559912.935 | 556.420 |
| 403 | 484813.858 | 559912.768 | 556.290 |
| 404 | 484812.316 | 559912.617 | 556.140 |
| 405 | 484810.229 | 559912.735 | 556.220 |
| 406 | 484808.367 | 559912.951 | 555.800 |
| 407 | 484807.215 | 559912.923 | 555.250 |
| 408 | 484807.194 | 559916.711 | 556.140 |
| 409 | 484806.658 | 559908.645 | 554.500 |
| 410 | 484807.992 | 559908.023 | 554.930 |
| 411 | 484810.283 | 559907.503 | 555.620 |
| 412 | 484811.307 | 559907.064 | 555.700 |
| 413 | 484812.221 | 559906.850 | 555.630 |
| 414 | 484813.557 | 559906.509 | 555.690 |
| 415 | 484814.881 | 559906.321 | 555.770 |
| 416 | 484816.036 | 559905.815 | 556.160 |

| Nr. pct. | Inventar de coordonate | | |
|-------------|-------------------------------------|------------|---------|
| | Sistem de proiectie 1970 | | |
| | Plan de referinta Marea Neagra 1975 | | |
| | X[m] | Y[m] | Z[m] |
| 417 | 484818.290 | 559905.251 | 556.780 |
| 418 | 484817.032 | 559900.429 | 555.930 |
| 419 | 484815.524 | 559901.022 | 555.500 |
| 420 | 484813.861 | 559901.789 | 555.320 |
| 421 | 484812.890 | 559902.179 | 555.270 |
| 422 | 484811.535 | 559902.660 | 555.220 |
| 423 | 484809.960 | 559903.662 | 555.140 |
| 424 | 484807.708 | 559904.664 | 554.560 |
| 425 | 484805.581 | 559905.485 | 554.250 |
| 426 | 484805.971 | 559903.263 | 554.220 |
| 427 | 484807.942 | 559900.944 | 554.520 |
| 428 | 484808.809 | 559899.984 | 554.650 |
| 429 | 484809.348 | 559899.073 | 554.670 |
| 430 | 484810.230 | 559897.831 | 554.670 |
| 431 | 484811.319 | 559896.207 | 554.730 |
| 432 | 484813.776 | 559893.392 | 554.670 |
| 433 | 484812.906 | 559890.987 | 554.490 |
| 434 | 484812.896 | 559889.481 | 553.830 |
| 435 | 484805.953 | 559889.279 | 553.850 |
| 436 | 484805.615 | 559888.298 | 553.090 |
| 437 | 484806.294 | 559891.252 | 554.060 |
| 438 | 484807.691 | 559893.657 | 554.310 |
| 439 | 484808.005 | 559896.356 | 554.290 |
| 440 | 484807.806 | 559897.727 | 554.360 |
| 441 | 484807.473 | 559899.354 | 554.350 |
| 442 | 484807.078 | 559900.825 | 554.390 |
| 443 | 484804.035 | 559902.183 | 553.900 |
| 444 | 484803.932 | 559900.694 | 553.880 |
| 445 | 484803.985 | 559899.138 | 553.890 |
| 446 | 484803.862 | 559897.978 | 553.890 |
| 447 | 484803.481 | 559896.291 | 553.890 |
| 448 | 484802.505 | 559894.492 | 553.830 |
| 449 | 484801.927 | 559892.541 | 553.530 |
| 450 | 484797.984 | 559895.832 | 553.430 |
| 451 | 484798.511 | 559896.514 | 553.460 |
| 452 | 484799.024 | 559897.062 | 553.610 |
| 453 | 484799.468 | 559898.219 | 553.620 |
| 454 | 484800.032 | 559899.408 | 553.640 |
| 455 | 484800.487 | 559900.873 | 553.630 |
| 456 | 484800.935 | 559902.505 | 553.640 |
| 457 | 484797.496 | 559902.050 | 553.500 |
| 458 | 484796.086 | 559902.172 | 553.390 |
| 459 | 484797.169 | 559901.100 | 553.410 |
| 460 | 484797.032 | 559900.492 | 553.370 |

| Nr. pct. | Inventar de coordonate | | |
|-------------|-------------------------------------|------------|---------|
| | Sistem de proiectie 1970 | | |
| | Plan de referinta Marea Neagra 1975 | | |
| | X[m] | Y[m] | Z[m] |
| 461 | 484796.269 | 559899.602 | 553.350 |
| 462 | 484795.461 | 559898.589 | 553.300 |
| 463 | 484794.600 | 559897.820 | 553.190 |
| 464 | 484793.307 | 559903.895 | 553.240 |
| 465 | 484793.039 | 559903.688 | 553.090 |
| 466 | 484792.454 | 559903.408 | 552.980 |
| 467 | 484791.662 | 559903.025 | 552.960 |
| 468 | 484790.658 | 559902.579 | 552.920 |
| 469 | 484789.613 | 559903.215 | 552.810 |
| 470 | 484789.843 | 559901.835 | 552.650 |
| 471 | 484788.802 | 559901.562 | 552.500 |
| 472 | 484787.635 | 559901.480 | 552.450 |
| 473 | 484787.029 | 559901.469 | 552.480 |
| 474 | 484787.679 | 559896.611 | 552.010 |
| 475 | 484788.274 | 559896.668 | 552.110 |
| 476 | 484789.206 | 559896.906 | 552.060 |
| 477 | 484790.099 | 559897.243 | 552.040 |
| 478 | 484791.048 | 559897.600 | 552.080 |
| 479 | 484794.665 | 559893.878 | 551.820 |
| 480 | 484793.652 | 559893.243 | 551.550 |
| 481 | 484793.061 | 559892.785 | 551.530 |
| 482 | 484792.032 | 559892.303 | 551.460 |
| 483 | 484789.981 | 559891.369 | 551.210 |
| 484 | 484787.604 | 559891.379 | 550.910 |
| 485 | 484793.683 | 559884.664 | 550.510 |
| 486 | 484795.009 | 559885.280 | 550.640 |
| 487 | 484796.437 | 559886.243 | 550.760 |
| 488 | 484797.227 | 559886.755 | 550.830 |
| 489 | 484798.216 | 559887.526 | 550.830 |
| 490 | 484799.186 | 559888.399 | 551.120 |
| 491 | 484786.514 | 559903.957 | 552.790 |
| 492 | 484786.794 | 559904.528 | 552.650 |
| 493 | 484787.155 | 559904.356 | 552.710 |
| 494 | 484787.873 | 559904.570 | 552.740 |
| 495 | 484789.412 | 559905.109 | 552.870 |
| 496 | 484790.571 | 559905.585 | 552.860 |
| 497 | 484790.618 | 559906.227 | 552.910 |
| 498 | 484791.292 | 559906.011 | 553.010 |
| 499 | 484791.654 | 559906.271 | 553.220 |
| 500 | 484790.030 | 559909.265 | 553.130 |
| 501 | 484789.712 | 559909.095 | 552.890 |
| 502 | 484789.010 | 559908.822 | 552.880 |
| 503 | 484788.040 | 559908.568 | 552.880 |
| 504 | 484786.601 | 559907.663 | 552.890 |

| Nr. pct. | Inventar de coordonate | | |
|-------------|-------------------------------------|------------|---------|
| | Sistem de proiectie 1970 | | |
| | Plan de referinta Marea Neagra 1975 | | |
| | X[m] | Y[m] | Z[m] |
| 505 | 484786.118 | 559907.536 | 552.800 |
| 506 | 484785.652 | 559907.370 | 552.930 |
| 507 | 484784.880 | 559911.202 | 553.110 |
| 508 | 484784.019 | 559913.648 | 553.090 |
| 509 | 484784.847 | 559913.984 | 553.070 |
| 510 | 484785.780 | 559914.222 | 553.010 |
| 511 | 484786.786 | 559914.632 | 552.950 |
| 512 | 484787.438 | 559914.872 | 553.030 |
| 513 | 484788.148 | 559915.318 | 553.150 |
| 514 | 484787.583 | 559917.043 | 553.190 |
| 515 | 484786.540 | 559919.783 | 553.040 |
| 516 | 484786.096 | 559919.733 | 553.040 |
| 517 | 484785.281 | 559919.660 | 552.970 |
| 518 | 484784.248 | 559919.555 | 552.990 |
| 519 | 484783.281 | 559919.306 | 552.960 |
| 520 | 484782.059 | 559919.833 | 553.130 |
| 521 | 484783.110 | 559916.281 | 553.140 |
| 522 | 484778.366 | 559930.672 | 552.900 |
| 523 | 484779.021 | 559930.837 | 552.930 |
| 524 | 484779.620 | 559930.982 | 552.980 |
| 525 | 484780.538 | 559931.402 | 552.980 |
| 526 | 484781.716 | 559931.694 | 552.960 |
| 527 | 484782.333 | 559931.877 | 553.040 |
| 528 | 484783.065 | 559932.196 | 553.080 |
| 529 | 484782.598 | 559933.909 | 552.960 |
| 530 | 484785.593 | 559937.540 | 553.090 |
| 531 | 484781.201 | 559941.424 | 553.130 |
| 532 | 484780.099 | 559944.892 | 553.440 |
| 533 | 484779.502 | 559941.649 | 553.130 |
| 534 | 484778.570 | 559941.458 | 553.060 |
| 535 | 484777.696 | 559941.265 | 553.050 |
| 536 | 484776.737 | 559941.001 | 553.060 |
| 537 | 484775.937 | 559940.771 | 553.150 |
| 538 | 484775.226 | 559940.325 | 553.180 |
| 539 | 484773.011 | 559947.453 | 553.400 |
| 540 | 484772.570 | 559948.271 | 553.340 |
| 541 | 484773.267 | 559948.143 | 553.300 |
| 542 | 484773.992 | 559948.868 | 553.210 |
| 543 | 484774.848 | 559949.142 | 553.170 |
| 544 | 484775.920 | 559949.571 | 553.160 |
| 545 | 484776.569 | 559949.737 | 553.340 |
| 546 | 484777.028 | 559949.818 | 553.370 |
| 547 | 484775.600 | 559952.811 | 553.310 |
| 548 | 484775.337 | 559953.971 | 553.310 |

| Nr. pct. | Inventar de coordonate | | |
|-------------|-------------------------------------|------------|---------|
| | Sistem de proiectie 1970 | | |
| | Plan de referinta Marea Neagra 1975 | | |
| | X[m] | Y[m] | Z[m] |
| 549 | 484774.921 | 559955.527 | 553.410 |
| 550 | 484775.291 | 559955.872 | 553.460 |
| 551 | 484774.926 | 559957.136 | 553.490 |
| 552 | 484774.673 | 559958.075 | 553.450 |
| 553 | 484774.475 | 559956.761 | 553.410 |
| 554 | 484774.014 | 559956.547 | 553.340 |
| 555 | 484773.103 | 559956.311 | 553.400 |
| 556 | 484772.009 | 559956.004 | 553.480 |
| 557 | 484771.202 | 559955.663 | 553.500 |
| 558 | 484770.163 | 559955.113 | 553.490 |
| 559 | 484769.393 | 559957.256 | 553.720 |
| 560 | 484773.952 | 559960.424 | 553.530 |
| 561 | 484772.401 | 559965.823 | 553.230 |
| 562 | 484773.420 | 559966.288 | 553.610 |
| 563 | 484776.551 | 559968.070 | 553.540 |
| 564 | 484776.910 | 559967.093 | 553.240 |
| 565 | 484773.747 | 559970.965 | 553.360 |
| 566 | 484775.277 | 559972.584 | 553.530 |
| 567 | 484772.947 | 559972.191 | 553.310 |
| 568 | 484770.381 | 559971.475 | 553.330 |
| 569 | 484769.205 | 559971.300 | 553.340 |
| 570 | 484768.047 | 559970.970 | 553.440 |
| 571 | 484766.495 | 559970.401 | 553.550 |
| 572 | 484765.272 | 559969.847 | 553.540 |
| 573 | 484766.734 | 559964.913 | 553.990 |
| 574 | 484767.445 | 559964.982 | 553.730 |
| 575 | 484769.197 | 559965.119 | 553.560 |
| 576 | 484770.291 | 559965.312 | 553.420 |
| 577 | 484771.464 | 559965.639 | 553.400 |
| 578 | 484764.071 | 559973.771 | 553.490 |
| 579 | 484764.987 | 559974.067 | 553.620 |
| 580 | 484766.554 | 559974.682 | 553.250 |
| 581 | 484767.853 | 559975.315 | 553.210 |
| 582 | 484769.354 | 559976.142 | 553.170 |
| 583 | 484770.983 | 559977.102 | 553.180 |
| 584 | 484772.549 | 559977.877 | 553.180 |
| 585 | 484769.576 | 559982.937 | 553.120 |
| 586 | 484768.082 | 559982.159 | 553.070 |
| 587 | 484766.637 | 559981.407 | 553.090 |
| 588 | 484765.346 | 559980.697 | 553.100 |
| 589 | 484764.014 | 559980.028 | 553.120 |
| 590 | 484762.961 | 559979.480 | 553.210 |
| 591 | 484762.247 | 559979.044 | 553.110 |
| 592 | 484759.252 | 559982.702 | 553.100 |

| Nr. pct. | Inventar de coordonate | | |
|-------------|-------------------------------------|------------|---------|
| | Sistem de proiectie 1970 | | |
| | Plan de referinta Marea Neagra 1975 | | |
| | X[m] | Y[m] | Z[m] |
| 593 | 484766.990 | 559986.583 | 553.120 |
| 594 | 484762.712 | 559990.126 | 552.990 |
| 595 | 484762.054 | 559989.747 | 552.940 |
| 596 | 484760.411 | 559988.735 | 552.980 |
| 597 | 484759.426 | 559988.129 | 552.980 |
| 598 | 484758.467 | 559987.289 | 552.990 |
| 599 | 484757.351 | 559986.444 | 553.050 |
| 600 | 484756.794 | 559985.967 | 553.120 |
| 601 | 484756.023 | 559987.308 | 553.030 |
| 602 | 484755.450 | 559987.696 | 553.160 |
| 603 | 484754.713 | 559988.635 | 553.050 |
| 604 | 484754.127 | 559989.402 | 552.960 |
| 605 | 484753.540 | 559990.544 | 553.000 |
| 606 | 484754.747 | 559989.935 | 552.890 |
| 607 | 484755.540 | 559990.504 | 552.880 |
| 608 | 484756.541 | 559991.294 | 552.880 |
| 609 | 484757.444 | 559992.048 | 552.840 |
| 610 | 484759.411 | 559993.474 | 552.820 |
| 611 | 484759.908 | 559993.841 | 552.840 |
| 612 | 484760.675 | 559992.918 | 552.900 |
| 613 | 484757.109 | 559996.978 | 552.760 |
| 614 | 484749.355 | 559995.592 | 552.930 |
| 615 | 484745.395 | 560000.279 | 552.800 |
| 616 | 484745.972 | 560000.533 | 552.700 |
| 617 | 484746.713 | 560000.818 | 552.620 |
| 618 | 484747.505 | 560001.259 | 552.610 |
| 619 | 484748.675 | 560002.062 | 552.580 |
| 620 | 484749.538 | 560002.518 | 552.560 |
| 621 | 484750.376 | 560003.325 | 552.550 |
| 622 | 484749.200 | 560005.183 | 552.610 |
| 623 | 484748.473 | 560005.921 | 552.590 |
| 624 | 484747.798 | 560006.572 | 552.620 |
| 625 | 484744.487 | 560009.923 | 552.550 |
| 626 | 484743.395 | 560010.914 | 552.520 |
| 627 | 484742.553 | 560011.771 | 552.530 |
| 628 | 484741.983 | 560011.308 | 552.440 |
| 629 | 484741.391 | 560010.914 | 552.460 |
| 630 | 484740.447 | 560010.300 | 552.440 |
| 631 | 484739.456 | 560009.541 | 552.430 |
| 632 | 484738.805 | 560008.879 | 552.500 |
| 633 | 484735.362 | 560012.946 | 552.280 |
| 634 | 484736.189 | 560013.400 | 552.430 |
| 635 | 484737.181 | 560013.854 | 552.380 |
| 636 | 484738.000 | 560014.710 | 552.360 |

| Nr. pct. | Inventar de coordonate | | |
|-------------|-------------------------------------|------------|---------|
| | Sistem de proiectie 1970 | | |
| | Plan de referinta Marea Neagra 1975 | | |
| | X[m] | Y[m] | Z[m] |
| 637 | 484738.342 | 560015.036 | 552.410 |
| 638 | 484738.734 | 560015.498 | 552.420 |
| 639 | 484739.867 | 560016.801 | 552.390 |
| 640 | 484738.912 | 560018.528 | 552.440 |
| 641 | 484738.324 | 560020.100 | 552.410 |
| 642 | 484736.605 | 560022.761 | 552.410 |
| 643 | 484735.078 | 560022.049 | 552.300 |
| 644 | 484733.768 | 560021.036 | 552.300 |
| 645 | 484732.912 | 560020.449 | 552.290 |
| 646 | 484731.847 | 560019.583 | 552.290 |
| 647 | 484731.565 | 560019.378 | 552.340 |
| 648 | 484730.604 | 560018.552 | 552.120 |
| 649 | 484731.207 | 560017.786 | 552.070 |
| 650 | 484728.350 | 560021.356 | 552.050 |
| 651 | 484724.840 | 560026.296 | 551.920 |
| 652 | 484725.459 | 560026.613 | 552.130 |
| 653 | 484726.215 | 560027.066 | 552.230 |
| 654 | 484727.112 | 560027.672 | 552.250 |
| 655 | 484728.130 | 560028.448 | 552.260 |
| 656 | 484728.944 | 560029.080 | 552.300 |
| 657 | 484731.124 | 560030.608 | 553.510 |
| 658 | 484727.625 | 560037.460 | 554.910 |
| 659 | 484727.351 | 560042.119 | 556.760 |
| 660 | 484728.414 | 560043.939 | 557.320 |
| 661 | 484729.998 | 560046.669 | 557.320 |
| 662 | 484715.511 | 560059.522 | 555.490 |
| 663 | 484713.822 | 560061.360 | 555.290 |
| 664 | 484712.318 | 560062.709 | 555.160 |
| 665 | 484713.065 | 560059.494 | 555.010 |
| 666 | 484711.995 | 560058.442 | 555.140 |
| 667 | 484709.016 | 560056.754 | 553.020 |
| 668 | 484708.307 | 560056.070 | 552.890 |
| 669 | 484707.600 | 560055.198 | 552.820 |
| 670 | 484706.447 | 560054.379 | 552.740 |
| 671 | 484705.617 | 560053.515 | 552.710 |
| 672 | 484704.969 | 560052.426 | 552.510 |
| 673 | 484709.039 | 560047.806 | 552.370 |
| 674 | 484709.670 | 560047.078 | 552.280 |
| 675 | 484711.181 | 560045.349 | 552.270 |
| 676 | 484712.005 | 560046.023 | 552.450 |
| 677 | 484712.704 | 560046.424 | 552.570 |
| 678 | 484713.757 | 560047.131 | 552.590 |
| 679 | 484714.791 | 560047.753 | 552.620 |
| 680 | 484715.734 | 560048.310 | 552.640 |

| Nr. pct. | Inventar de coordonate | | |
|-------------|-------------------------------------|------------|---------|
| | Sistem de proiectie 1970 | | |
| | Plan de referinta Marea Neagra 1975 | | |
| | X[m] | Y[m] | Z[m] |
| 681 | 484720.109 | 560041.505 | 552.650 |
| 682 | 484719.726 | 560041.238 | 552.550 |
| 683 | 484718.667 | 560040.747 | 552.540 |
| 684 | 484717.506 | 560040.124 | 552.480 |
| 685 | 484716.501 | 560039.703 | 552.460 |
| 686 | 484716.599 | 560039.259 | 552.320 |
| 687 | 484715.898 | 560038.546 | 551.910 |
| 688 | 484718.911 | 560035.326 | 552.350 |
| 689 | 484719.598 | 560033.921 | 552.130 |
| 690 | 484720.193 | 560032.283 | 551.970 |
| 691 | 484720.756 | 560032.756 | 552.270 |
| 692 | 484721.711 | 560033.484 | 552.320 |
| 693 | 484722.764 | 560034.174 | 552.330 |
| 694 | 484724.107 | 560035.052 | 552.340 |
| 695 | 484700.565 | 560058.788 | 552.700 |
| 696 | 484698.015 | 560060.809 | 552.420 |
| 697 | 484698.524 | 560061.321 | 552.620 |
| 698 | 484699.033 | 560062.003 | 552.660 |
| 699 | 484699.884 | 560062.613 | 552.690 |
| 700 | 484700.794 | 560063.550 | 552.690 |
| 701 | 484701.793 | 560064.501 | 552.940 |
| 702 | 484698.935 | 560064.863 | 552.610 |
| 703 | 484697.935 | 560069.484 | 553.200 |
| 704 | 484697.353 | 560068.906 | 552.680 |
| 705 | 484696.434 | 560068.173 | 552.470 |
| 706 | 484695.616 | 560067.590 | 552.440 |
| 707 | 484694.592 | 560066.967 | 552.440 |
| 708 | 484693.663 | 560065.988 | 552.600 |
| 709 | 484688.236 | 560072.328 | 551.700 |
| 710 | 484689.158 | 560072.840 | 551.850 |
| 711 | 484690.043 | 560073.549 | 551.820 |
| 712 | 484690.879 | 560074.369 | 551.800 |
| 713 | 484691.395 | 560074.845 | 551.920 |
| 714 | 484692.195 | 560075.740 | 552.450 |
| 715 | 484682.213 | 560079.756 | 551.250 |
| 716 | 484682.844 | 560080.124 | 551.400 |
| 717 | 484683.473 | 560080.554 | 551.170 |
| 718 | 484684.267 | 560081.005 | 551.120 |
| 719 | 484685.357 | 560081.828 | 551.150 |
| 720 | 484685.941 | 560082.245 | 551.250 |
| 721 | 484687.493 | 560083.157 | 551.640 |
| 722 | 484691.933 | 560083.164 | 552.310 |
| 723 | 484695.471 | 560079.298 | 552.640 |
| 724 | 484693.926 | 560077.704 | 552.530 |

| Nr. pct. | Inventar de coordonate | | |
|-------------|-------------------------------------|------------|---------|
| | Sistem de proiectie 1970 | | |
| | Plan de referinta Marea Neagra 1975 | | |
| | X[m] | Y[m] | Z[m] |
| 725 | 484693.507 | 560089.265 | 552.520 |
| 726 | 484690.983 | 560091.968 | 552.350 |
| 727 | 484689.814 | 560092.625 | 552.100 |
| 728 | 484684.829 | 560092.842 | 551.940 |
| 729 | 484684.851 | 560091.457 | 551.800 |
| 730 | 484684.509 | 560091.108 | 551.620 |
| 731 | 484687.191 | 560088.226 | 551.640 |
| 732 | 484683.488 | 560089.663 | 551.070 |
| 733 | 484681.214 | 560088.471 | 550.690 |
| 734 | 484680.070 | 560087.746 | 550.640 |
| 735 | 484678.757 | 560086.809 | 550.650 |
| 736 | 484678.035 | 560086.203 | 550.780 |
| 737 | 484677.401 | 560085.765 | 550.600 |
| 738 | 484673.640 | 560090.266 | 550.110 |
| 739 | 484673.063 | 560091.024 | 550.110 |
| 740 | 484674.260 | 560097.229 | 550.020 |
| 741 | 484677.178 | 560097.740 | 550.370 |
| 742 | 484678.743 | 560096.324 | 550.560 |
| 743 | 484673.652 | 560101.574 | 549.910 |
| 744 | 484673.045 | 560101.228 | 549.750 |
| 745 | 484671.648 | 560100.336 | 549.660 |
| 746 | 484670.500 | 560099.567 | 549.620 |
| 747 | 484669.285 | 560098.745 | 549.580 |
| 748 | 484668.421 | 560098.146 | 549.730 |
| 749 | 484667.463 | 560097.198 | 549.480 |
| 750 | 484661.115 | 560104.075 | 548.940 |
| 751 | 484662.325 | 560104.843 | 549.230 |
| 752 | 484662.984 | 560105.233 | 549.070 |
| 753 | 484663.662 | 560105.710 | 549.090 |
| 754 | 484664.626 | 560106.349 | 549.080 |
| 755 | 484665.772 | 560107.251 | 549.130 |
| 756 | 484666.413 | 560107.810 | 549.220 |
| 757 | 484666.970 | 560108.472 | 549.350 |
| 758 | 484661.728 | 560113.888 | 548.990 |
| 759 | 484661.450 | 560113.517 | 548.940 |
| 760 | 484660.926 | 560113.182 | 548.830 |
| 761 | 484660.057 | 560112.553 | 548.760 |
| 762 | 484659.008 | 560111.777 | 548.730 |
| 763 | 484658.381 | 560111.437 | 548.640 |
| 764 | 484656.963 | 560110.366 | 548.150 |
| 765 | 484656.138 | 560109.816 | 547.820 |
| 766 | 484657.850 | 560109.722 | 548.610 |
| 767 | 484658.698 | 560107.873 | 548.760 |
| 768 | 484659.095 | 560107.694 | 548.770 |

| Nr. pct. | Inventar de coordonate | | |
|-------------|-------------------------------------|------------|---------|
| | Sistem de proiectie 1970 | | |
| | Plan de referinta Marea Neagra 1975 | | |
| | X[m] | Y[m] | Z[m] |
| 769 | 484658.058 | 560118.174 | 548.850 |
| 770 | 484657.005 | 560120.156 | 549.070 |
| 771 | 484654.219 | 560123.134 | 548.760 |
| 772 | 484656.156 | 560119.481 | 548.690 |
| 773 | 484655.691 | 560119.023 | 548.570 |
| 774 | 484654.700 | 560118.244 | 548.490 |
| 775 | 484653.747 | 560117.410 | 548.470 |
| 776 | 484652.722 | 560116.503 | 548.270 |
| 777 | 484654.122 | 560114.841 | 548.410 |
| 778 | 484652.381 | 560124.950 | 548.350 |
| 779 | 484649.286 | 560128.231 | 548.080 |
| 780 | 484648.815 | 560127.872 | 548.010 |
| 781 | 484647.986 | 560127.178 | 547.940 |
| 782 | 484646.960 | 560126.340 | 547.870 |
| 783 | 484645.868 | 560125.239 | 547.860 |
| 784 | 484645.152 | 560124.645 | 547.720 |
| 785 | 484635.689 | 560134.045 | 547.290 |
| 786 | 484636.044 | 560134.446 | 547.370 |
| 787 | 484636.929 | 560135.277 | 547.390 |
| 788 | 484638.086 | 560136.630 | 547.440 |
| 789 | 484638.887 | 560137.318 | 547.540 |
| 790 | 484639.571 | 560138.071 | 547.560 |
| 791 | 484638.339 | 560139.241 | 547.590 |
| 792 | 484637.564 | 560140.164 | 547.650 |
| 793 | 484636.857 | 560140.900 | 547.590 |
| 794 | 484634.766 | 560142.389 | 547.450 |
| 795 | 484634.367 | 560142.014 | 547.400 |
| 796 | 484633.237 | 560140.904 | 547.240 |
| 797 | 484632.317 | 560139.973 | 547.190 |
| 798 | 484631.348 | 560139.031 | 547.180 |
| 799 | 484630.760 | 560138.520 | 547.090 |
| 800 | 484632.672 | 560143.462 | 547.390 |
| 801 | 484630.695 | 560145.301 | 547.320 |
| 802 | 484628.300 | 560147.240 | 547.240 |
| 803 | 484624.298 | 560150.307 | 547.200 |
| 804 | 484627.443 | 560146.354 | 547.110 |
| 805 | 484626.782 | 560145.591 | 547.090 |

| Nr. pct. | Inventar de coordonate | | |
|-------------|-------------------------------------|------------|---------|
| | Sistem de proiectie 1970 | | |
| | Plan de referinta Marea Neagra 1975 | | |
| | X[m] | Y[m] | Z[m] |
| 806 | 484626.123 | 560144.813 | 547.040 |
| 807 | 484625.191 | 560143.608 | 547.050 |
| 808 | 484624.435 | 560142.596 | 546.870 |
| 809 | 484622.204 | 560151.648 | 547.030 |
| 810 | 484618.989 | 560153.794 | 546.910 |
| 811 | 484618.380 | 560153.172 | 546.850 |
| 812 | 484617.694 | 560152.357 | 546.860 |
| 813 | 484616.832 | 560151.440 | 546.790 |
| 814 | 484615.978 | 560150.361 | 546.790 |
| 815 | 484615.304 | 560149.515 | 546.710 |
| 816 | 484614.889 | 560156.634 | 546.710 |
| 817 | 484610.781 | 560159.604 | 546.570 |
| 818 | 484607.617 | 560161.757 | 546.540 |
| 819 | 484607.342 | 560161.367 | 546.520 |
| 820 | 484606.586 | 560160.317 | 546.540 |
| 821 | 484605.751 | 560159.385 | 546.530 |
| 822 | 484604.762 | 560158.190 | 546.510 |
| 823 | 484604.119 | 560157.176 | 546.370 |
| 824 | 484603.228 | 560155.565 | 545.830 |
| 825 | 484604.406 | 560154.570 | 545.810 |
| 826 | 484599.742 | 560158.236 | 545.710 |
| 827 | 484598.914 | 560159.434 | 545.860 |
| 828 | 484599.489 | 560160.599 | 546.260 |
| 829 | 484597.415 | 560161.638 | 546.150 |
| 830 | 484599.924 | 560161.561 | 546.420 |
| 831 | 484600.666 | 560162.440 | 546.440 |
| 832 | 484601.478 | 560163.473 | 546.480 |
| 833 | 484602.201 | 560164.355 | 546.570 |
| 834 | 484602.834 | 560165.163 | 546.480 |
| 835 | 484584.652 | 560179.507 | 547.100 |
| 836 | 484582.010 | 560181.467 | 547.050 |
| 837 | 484579.353 | 560181.707 | 546.260 |
| 838 | 484613.421 | 560130.092 | 542.850 |
| 839 | 484613.826 | 560129.485 | 542.740 |
| 840 | 484614.404 | 560128.848 | 542.720 |
| 841 | 484615.141 | 560127.750 | 542.650 |
| 842 | 484616.370 | 560126.498 | 542.750 |

| Nr. pct. | Inventar de coordonate | | |
|-------------|-------------------------------------|------------|---------|
| | Sistem de proiectie 1970 | | |
| | Plan de referinta Marea Neagra 1975 | | |
| | X[m] | Y[m] | Z[m] |
| 843 | 484611.509 | 560121.859 | 542.380 |
| 844 | 484610.959 | 560122.463 | 541.770 |
| 845 | 484607.627 | 560118.367 | 541.270 |
| 846 | 484607.402 | 560118.641 | 541.000 |
| 847 | 484606.951 | 560119.405 | 541.060 |
| 848 | 484606.197 | 560120.209 | 541.130 |
| 849 | 484605.421 | 560121.026 | 541.170 |
| 850 | 484604.660 | 560121.575 | 541.270 |
| 851 | 484597.441 | 560115.549 | 539.510 |
| 852 | 484597.612 | 560115.383 | 539.560 |
| 853 | 484597.983 | 560114.794 | 539.780 |
| 854 | 484598.574 | 560113.839 | 539.810 |
| 855 | 484599.197 | 560113.110 | 539.770 |
| 856 | 484599.874 | 560112.234 | 539.760 |
| 857 | 484600.671 | 560111.202 | 539.640 |
| 858 | 484601.588 | 560110.537 | 539.760 |
| 859 | 484599.056 | 560107.783 | 538.930 |
| 860 | 484597.769 | 560108.055 | 539.260 |
| 861 | 484597.093 | 560108.483 | 539.390 |
| 862 | 484596.315 | 560109.069 | 539.340 |
| 863 | 484594.957 | 560109.575 | 539.290 |
| 864 | 484593.388 | 560110.291 | 539.140 |
| 865 | 484592.614 | 560110.662 | 539.060 |
| 866 | 484597.418 | 560106.681 | 539.220 |
| 867 | 484781.832 | 559921.807 | 553.080 |
| 868 | 484779.287 | 559931.761 | 552.990 |
| 869 | 484766.566 | 559965.393 | 553.950 |
| 870 | 484555.832 | 560179.039 | 543.530 |
| 871 | 484520.093 | 560205.401 | 544.470 |
| 872 | 484524.362 | 560202.656 | 544.540 |
| 873 | 484542.814 | 560197.091 | 546.000 |
| 874 | 484671.680 | 560103.510 | 549.750 |
| 875 | 484678.995 | 560096.031 | 550.600 |
| 876 | 484682.779 | 560092.215 | 551.340 |

Suprafața a fost determinată analitic, rezultând $S = 5547 \text{ mp}$;
Suprafața s-a calculat în baza relației:

STICEA MARIA-NICOLETA

Digitally signed by STICEA MARIA-NICOLETA
Reason: SC YDA PROIECT CONSULTING SRL, SERIA RO-B-J NR.2300, ING. STICEA MARIA NICOLETA, SERIA RO-NT-F, NR. 0099
Date: 2022.04.07 17:17:59 +03'00'

$$S = \frac{1}{2} \sum_{i=1}^n X_i (Y_{i+1} - Y_{i-1}) = 5547 \text{ mp}$$

| Numar Punct | X [m] | Y [m] |
|-------------|------------|------------|
| 871 | 484520.093 | 560205.401 |
| 96 | 484507.166 | 560196.984 |
| 97 | 484510.699 | 560195.857 |
| 99 | 484511.181 | 560196.253 |
| 114 | 484513.501 | 560195.516 |
| 126 | 484528.392 | 560189.945 |
| 141 | 484541.885 | 560183.944 |
| 870 | 484555.832 | 560179.039 |
| 163 | 484564.144 | 560175.124 |
| 170 | 484567.606 | 560173.001 |
| 180 | 484573.880 | 560168.215 |
| 188 | 484583.138 | 560160.936 |
| 204 | 484607.130 | 560142.918 |
| 219 | 484616.790 | 560134.341 |
| 850 | 484604.660 | 560121.575 |
| 865 | 484592.614 | 560110.662 |
| 382 | 484590.471 | 560106.739 |
| 375 | 484595.168 | 560104.034 |
| 845 | 484607.627 | 560118.367 |
| 225 | 484622.370 | 560130.791 |
| 235 | 484626.908 | 560126.279 |
| 246 | 484631.249 | 560121.285 |
| 266 | 484637.704 | 560111.298 |
| 280 | 484643.049 | 560102.207 |
| 765 | 484656.138 | 560109.816 |
| 739 | 484673.063 | 560091.024 |
| 709 | 484688.236 | 560072.328 |
| 696 | 484698.015 | 560060.809 |
| 675 | 484711.181 | 560045.349 |
| 690 | 484720.193 | 560032.283 |
| 650 | 484728.350 | 560021.356 |
| 632 | 484738.805 | 560008.879 |
| 604 | 484754.127 | 559989.402 |
| 591 | 484762.247 | 559979.044 |
| 869 | 484766.566 | 559965.393 |
| 541 | 484773.267 | 559948.143 |
| 868 | 484779.287 | 559931.761 |
| 867 | 484781.832 | 559921.807 |
| 508 | 484784.019 | 559913.648 |

| Numar Punct | X [m] | Y [m] |
|-------------|------------|------------|
| 473 | 484787.029 | 559901.469 |
| 474 | 484787.679 | 559896.611 |
| 484 | 484787.604 | 559891.379 |
| 486 | 484795.009 | 559885.280 |
| 490 | 484799.186 | 559888.399 |
| 437 | 484806.294 | 559891.252 |
| 432 | 484813.776 | 559893.392 |
| 418 | 484817.032 | 559900.429 |
| 417 | 484818.290 | 559905.251 |
| 400 | 484818.984 | 559912.948 |
| 399 | 484819.543 | 559921.732 |
| 384 | 484817.927 | 559931.098 |
| 386 | 484812.781 | 559932.383 |
| 391 | 484803.427 | 559931.294 |
| 392 | 484805.186 | 559926.758 |
| 393 | 484806.383 | 559921.477 |
| 408 | 484807.194 | 559916.711 |
| 407 | 484807.215 | 559912.923 |
| 425 | 484805.581 | 559905.485 |
| 456 | 484800.935 | 559902.505 |
| 457 | 484797.496 | 559902.050 |
| 458 | 484796.086 | 559902.172 |
| 464 | 484793.307 | 559903.895 |
| 500 | 484790.030 | 559909.265 |
| 515 | 484786.540 | 559919.783 |
| 529 | 484782.598 | 559933.909 |
| 530 | 484785.593 | 559937.540 |
| 532 | 484780.099 | 559944.892 |
| 546 | 484777.028 | 559949.818 |
| 545 | 484776.569 | 559949.737 |
| 549 | 484774.921 | 559955.527 |
| 550 | 484775.291 | 559955.872 |
| 561 | 484772.401 | 559965.823 |
| 564 | 484776.910 | 559967.093 |
| 566 | 484775.277 | 559972.584 |
| 585 | 484769.576 | 559982.937 |
| 593 | 484766.990 | 559986.583 |
| 594 | 484762.712 | 559990.126 |
| 621 | 484750.376 | 560003.325 |

| Numar Punct | X [m] | Y [m] |
|--------------------|------------|------------|
| 625 | 484744.487 | 560009.923 |
| 638 | 484738.734 | 560015.498 |
| 639 | 484739.867 | 560016.801 |
| 641 | 484738.324 | 560020.100 |
| 657 | 484731.124 | 560030.608 |
| 658 | 484727.625 | 560037.460 |
| 661 | 484729.998 | 560046.669 |
| 723 | 484695.471 | 560079.298 |
| 722 | 484691.933 | 560083.164 |
| 725 | 484693.507 | 560089.265 |
| 727 | 484689.814 | 560092.625 |
| 728 | 484684.829 | 560092.842 |
| 730 | 484684.509 | 560091.108 |
| 876 | 484682.779 | 560092.215 |
| 875 | 484678.995 | 560096.031 |
| 742 | 484678.743 | 560096.324 |
| 874 | 484671.680 | 560103.510 |
| 768 | 484659.098 | 560116.694 |
| 769 | 484658.058 | 560118.174 |
| 770 | 484657.005 | 560120.156 |
| 771 | 484654.219 | 560123.134 |
| 778 | 484652.381 | 560124.950 |
| 779 | 484649.286 | 560128.231 |
| 791 | 484638.339 | 560139.241 |
| 792 | 484637.564 | 560140.164 |
| 793 | 484636.857 | 560140.900 |
| 809 | 484622.204 | 560151.648 |
| 816 | 484614.889 | 560156.634 |
| 818 | 484607.617 | 560161.757 |
| 341 | 484592.754 | 560172.439 |
| 324 | 484576.100 | 560183.960 |
| 303 | 484554.429 | 560193.124 |
| 873 | 484542.814 | 560197.091 |
| 872 | 484524.362 | 560202.656 |
| 122 | 484520.630 | 560203.284 |
| Suprafata = 5547mp | | |

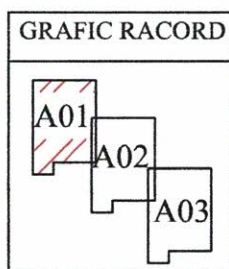
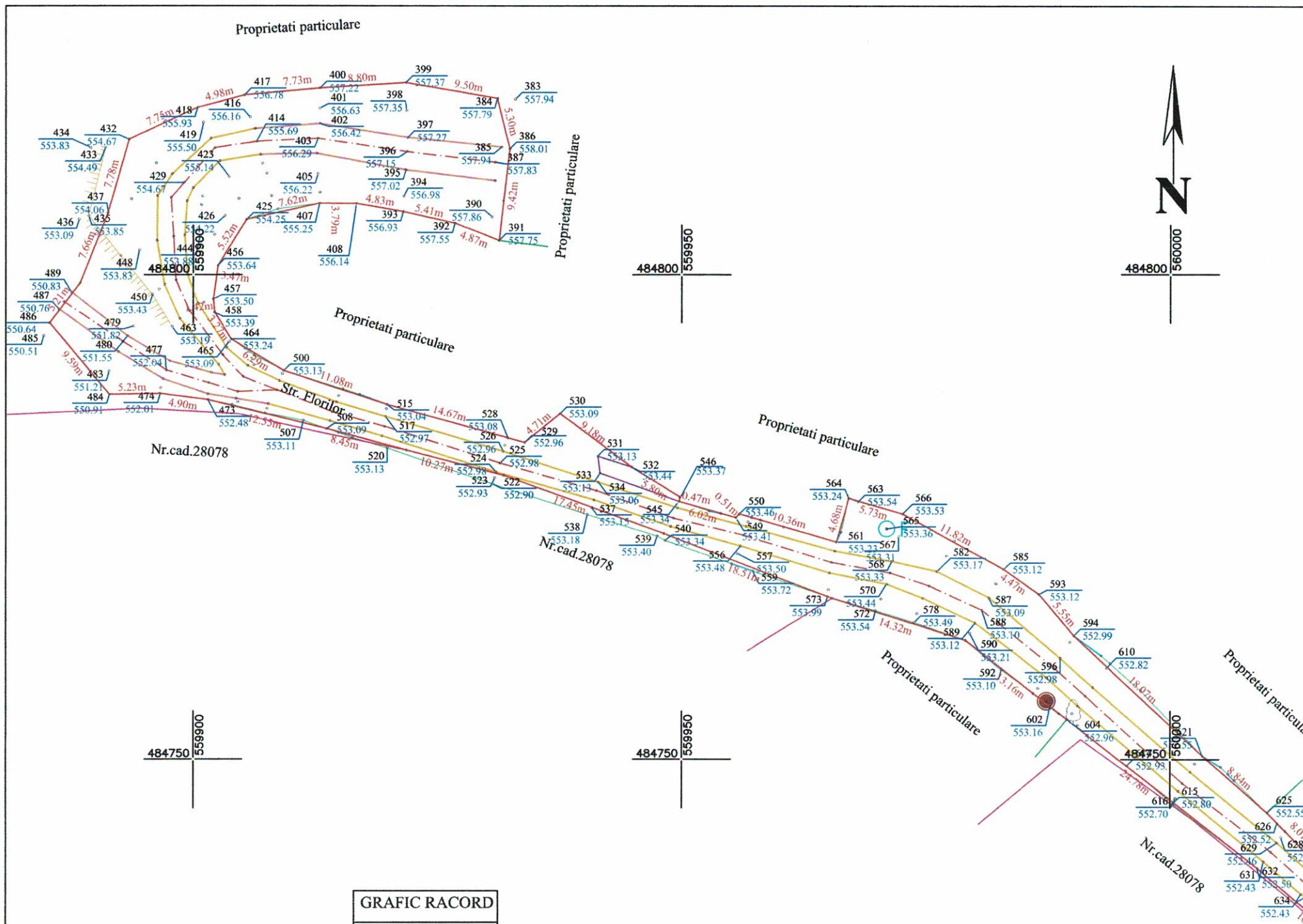
Redactarea planurilor

Planul de situație s-a redactat cu ajutorul imprimantei Konica Minolta.

Cartografierea, cadrul și carioajul planului s-au executat pe foaie de plan format A3.

Data întocmirii:
07.04.2022

Semnătura și ștampila:
S.C. YDA PROIECT CONSULTING S.R.L
STICEA MARIA-NICOLETA
Reason: SC YDA PROIECT CONSULTING SRL, SERIA RO-B-J NR.2300, ING. STICEA MARIA NICOLETA, SERIA RO-NT-F, NR. 0099
Date: 2022.04.07 17:18:09 +03'00'



| LEGENDA TOPOGRAFICA | |
|---|---|
| <ul style="list-style-type: none">- Limita de proprietate cu gard- Limita proprietate fara gard- Ciaraj- Limita intre proprietati- Limita Carte Funciara- Drum asfalt- Drum pietruit- Drum pamant- Ax drum- Rigola pamant- Ax rigola- Taluz- Trotuar- Poarta- Conducia gaz- Linie copaci- Platforma beton- Constructii- Scari- Zid beton- Nume strazi | <ul style="list-style-type: none">- Nord topografic- Fontana- Camin canal- Camin apa- Camin Bransament- Hidrant- Graier- Cutie gaz- Aerisire gaz- Copac- Stalp electric- Cutie racord electric- Semn de circulatie- Cos gunoi- Numere postale |

CERTIFICAT DE ELABORARE

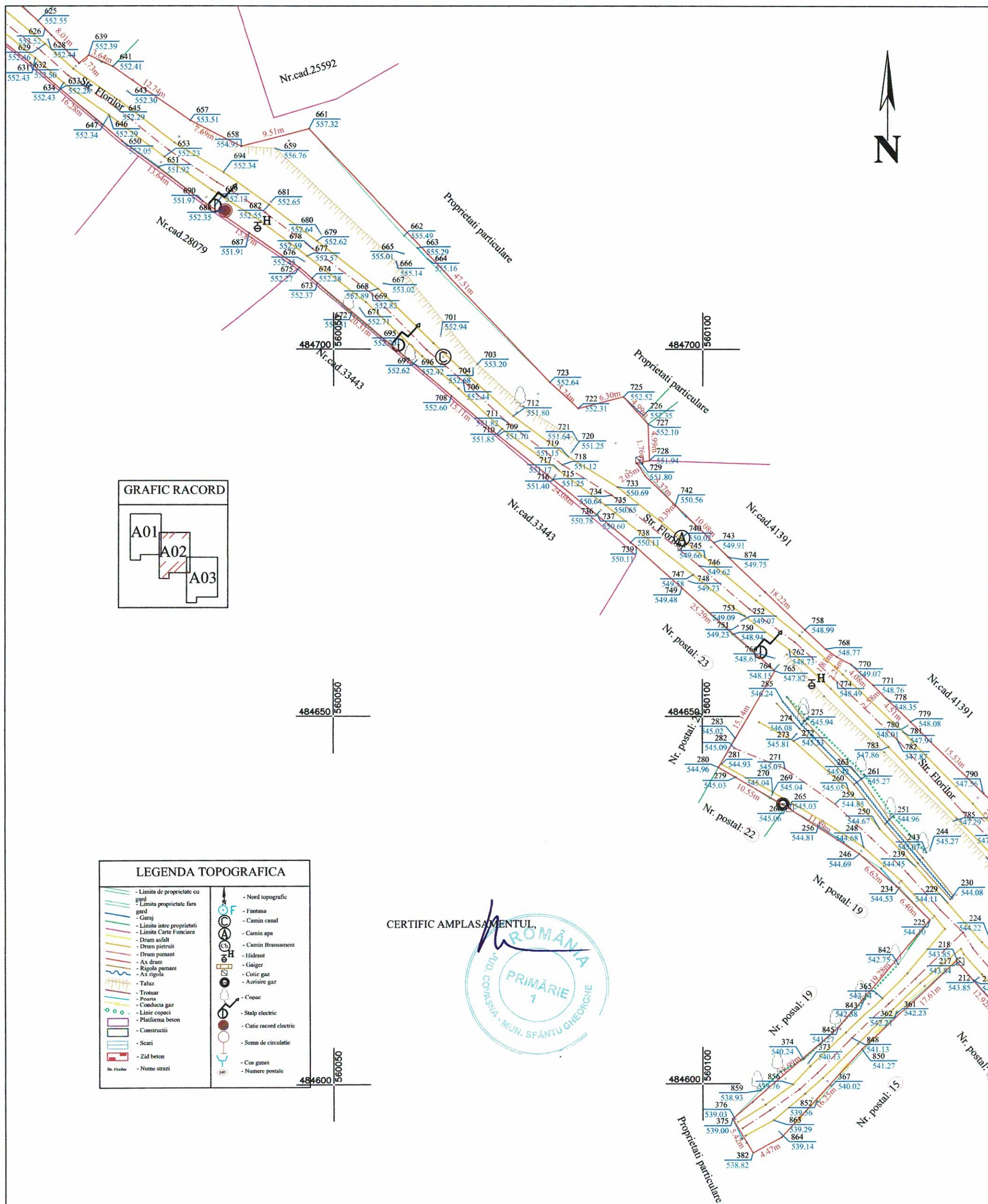


Planul se va utiliza doar în scopul solicitat, respectiv: „MODERNIZARE STRADA FLORILOR”- faza DALI și va fi însoțit de Procesul Verbal de Recepție Nr. 593/08.04.2022

Aurel-Lazar Pop

Semnat digital de Aurel-Lazar Pop
Data: 2022.04.08
10:34:35 +03'00'

| | | | | |
|---|-----------------|-----------|--|--|
| PERSOANA JURIDICA AUTORIZATA S.C.YDA PROIECT CONSULTING S.R.L. AUTORIZATIE CLASA III, SERIA RO-B-J NR.2300, PERSOANA FIZICA AUTORIZATA ING. STICEA MARIA NICOLETA, AUTORIZATIE CATEGORIA B, SERIA RO-NT-F NR. 0099 | | | Beneficiar:MUNICIPIUL SFANTU GHEORGHE Denumire proiect: Plan topografic intocmit in scopul: MODERNIZARE STRADA FLORILOR faza DALI Adresa: Intravilan Municipiul Sfantu Gheorghe, Str. Florilor, jud. Covasna S=5547 mp | |
| Actiunea | Numele | Semnatura | Scara: 1:500 | PLAN DE SITUATIE Sistem de proiectie - Stereo - 70 Plan de referinta - Marea Neagra 75 Plansa nr. A01 |
| Masurat | Sticea Maria N. | | | |
| Redactat | Sticea Maria N. | | | |
| Contr. STAS | MARIA- | | | |
| Verificat | NICOLETA | | | |
| Aprobat | | | Data: 05.04.2022 | |



Planul se va utiliza doar în scopul solicitat, respectiv: „MODERNIZARE STRADA FLORILOR”- faza DALI și va fi însoțit de Procesul Verbal de Recepție Nr. 593/08.04.2022

Aurel-Lazar Pop

Semnat digital de Aurel-Lazar Pop
Data: 2022.04.08
10:36:30 +03'00'

| | | | | |
|---|-----------------|--|---|--|
| PERSOANA JURIDICA AUTORIZATA S.C.YDA PROJECT CONSULTING S.R.L. AUTORIZATIE CLASA III, SERIA RO-B-J NR.2300, PERSOANA FIZICA AUTORIZATA ING. STICEA MARIA NICOLETA, AUTORIZATIE CATEGORIA B, SERIA RO-NT-F NR. 0099 | | | Beneficiar:MUNICIPIUL SFANTU GHEORGHE Denumire proiect: Plan topografic intocmit in scopul: MODERNIZARE STRADA FLORILOR faza DALI Adresa: Intravilan Municipiul Sfantu Gheorghe,Str. Florilor, jud. Covasna S=5547 mp | |
| Actiunea | Numele | Semnatura | Scara: 1:500 | PLAN DE SITUATIE Sistem de proiectie - Stereo - 70 Plan de referinta - Marea Neagra 75 Plansa nr. A02 |
| Masurat | Sticea Maria N. | | | |
| Redactat | Sticea Maria N. | | | |
| Contr. STAS | STICEA | Digitally signed by STICEA MARIA- NICOLETA Reason: SC-YDA PROJECT CONSULTING SRL SERIA RO-B-J NR.2300, ING. STICEA MARIA NICOLETA, SERIA RO-NT-F, NR. 0099 Date: 2022.04.07 17:19:46 +03'00' | | |
| Verificat | MARIA- | | | |
| Aprobat | NICOLETA | | | |

